

THE *Augusta I*

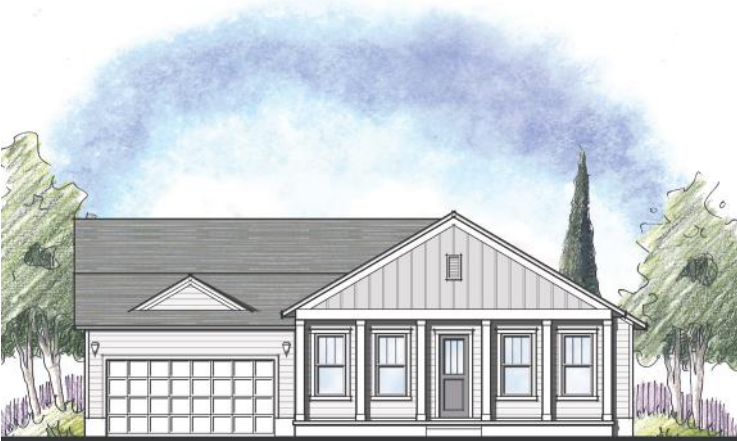
3 BEDROOM | 2 BATH | 2 CAR GARAGE • APPROX. 2,397 SQ. FT. LIVING AREA | 52'-0" WIDE X 78'-8" DEEP



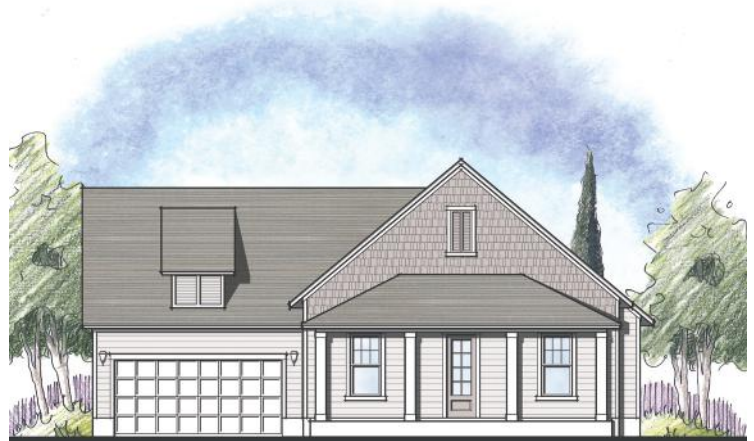
ELEVATION A



ELEVATION B



ELEVATION D



ELEVATION E



DREAM FINDERS HOMES

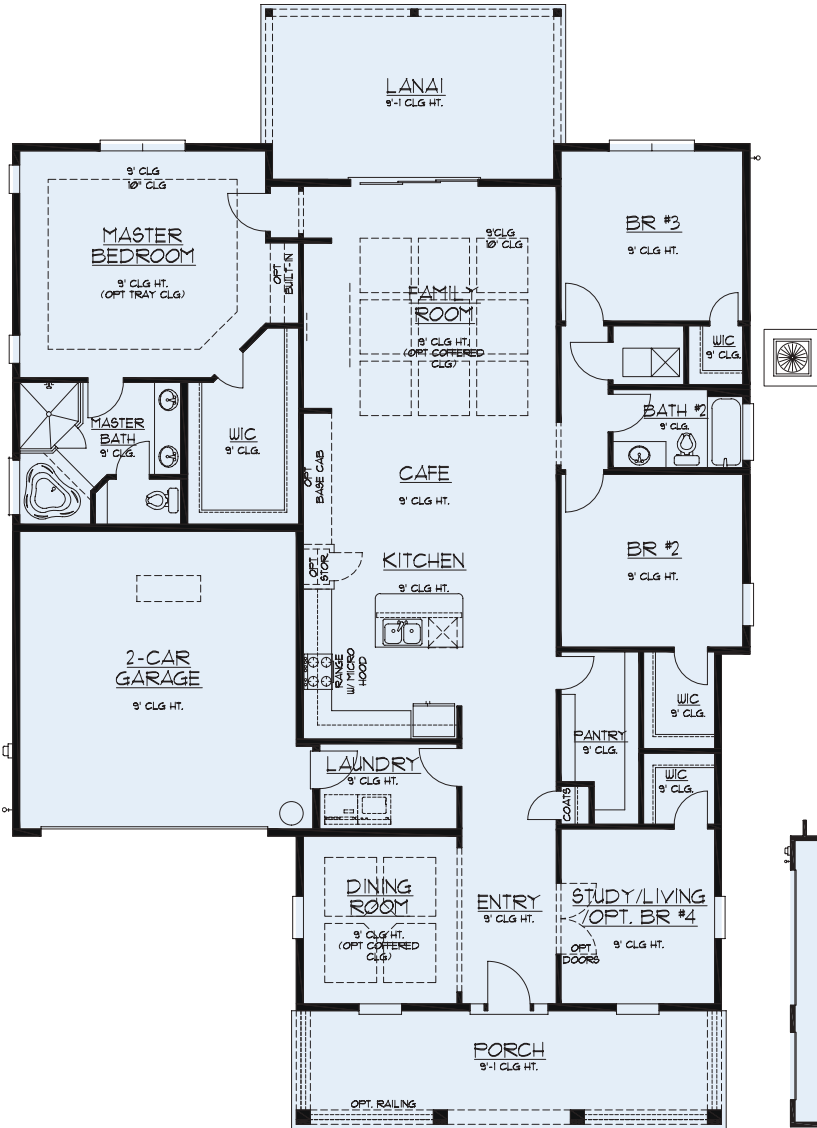
For a full list of elevations please visit [DreamFindersHomes.com](http://DreamFindersHomes.com). Elevations may be limited by community requirements. Plans are artist's renderings only. Dream Finders Homes reserves the right to make changes to these plans, specifications, and dimensions without prior notice. Copyright© 2018 Dream Finders Homes. 07/18



CGC1259652

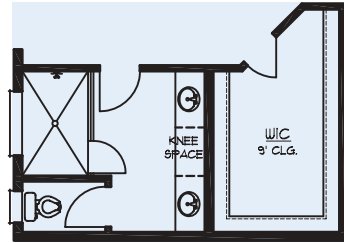
# THE Augusta I

3 BEDROOM | 2 BATH | 2 CAR GARAGE • APPROX. 2,397 SQ. FT. LIVING AREA | 52'-0" WIDE X 78'-8" DEEP

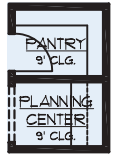


FLOOR PLAN

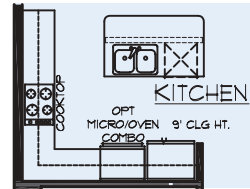
## OPTIONAL STRUCTURAL ADDITIONS



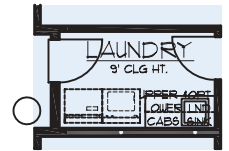
Optional Master Bath



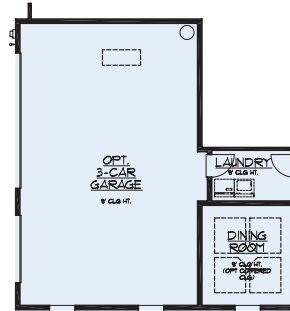
Optional Layout



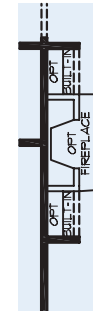
Optional Gourmet Kitchen



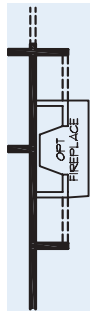
Optional Laundry w/ Cabinets



Optional 3rd Car Garage



Optional Fireplace w/ Built-Ins



Optional Fireplace @ Family Room



Optional Master Bay Window



Optional Hidden SGD



Optional BR#3 Bay Window



## DREAM FINDERS HOMES

For a full list of elevations please visit [DreamFindersHomes.com](http://DreamFindersHomes.com). Elevations may be limited by community requirements. Plans are artist's renderings only. Dream Finders Homes reserves the right to make changes to these plans, specifications, and dimensions without prior notice. Copyright© 2018 Dream Finders Homes. 07/18



CGC1259652