

THE *Durham*

4 - 7 BEDROOM | 3.5 - 6 BATH | 3 CAR GARAGE • APPROX. 4,310 - 6,970 SQ. FT. LIVING AREA



ELEVATION A



ELEVATION B



ELEVATION C



DREAM FINDERS HOMES

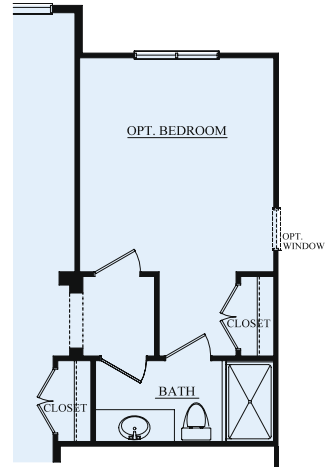
For a full list of elevations please visit DreamFindersHomes.com. Elevations may be limited by community requirements. Plans are artist's renderings only. Dream Finders Homes reserves the right to make changes to these plans, specifications, and dimensions without prior notice. Copyright© 2019 Dream Finders Homes. 02/19



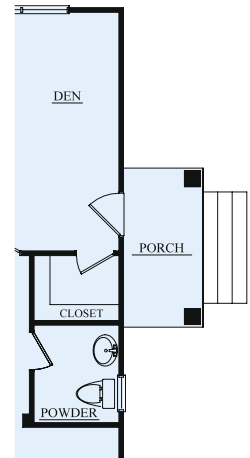
CGC1259652

THE *Durham*

FIRST FLOOR PLAN



Optional Bedroom & Bath

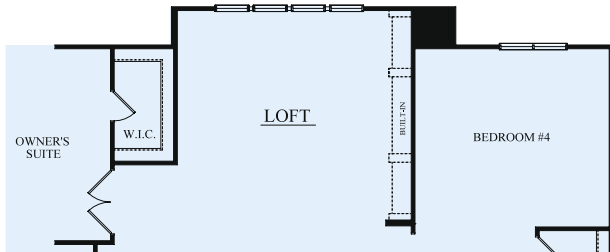


Optional Covered Side Porch

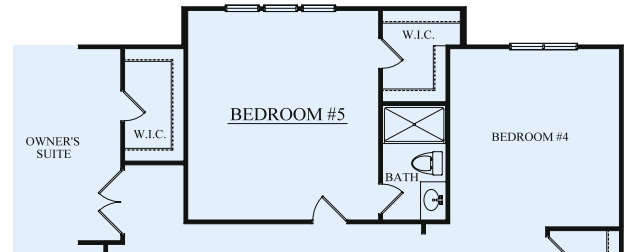
THE *Durham*

4 - 7 BEDROOM | 3.5 - 6 BATH | 3 CAR GARAGE • APPROX. 4,310 - 6,970 SQ. FT. LIVING AREA

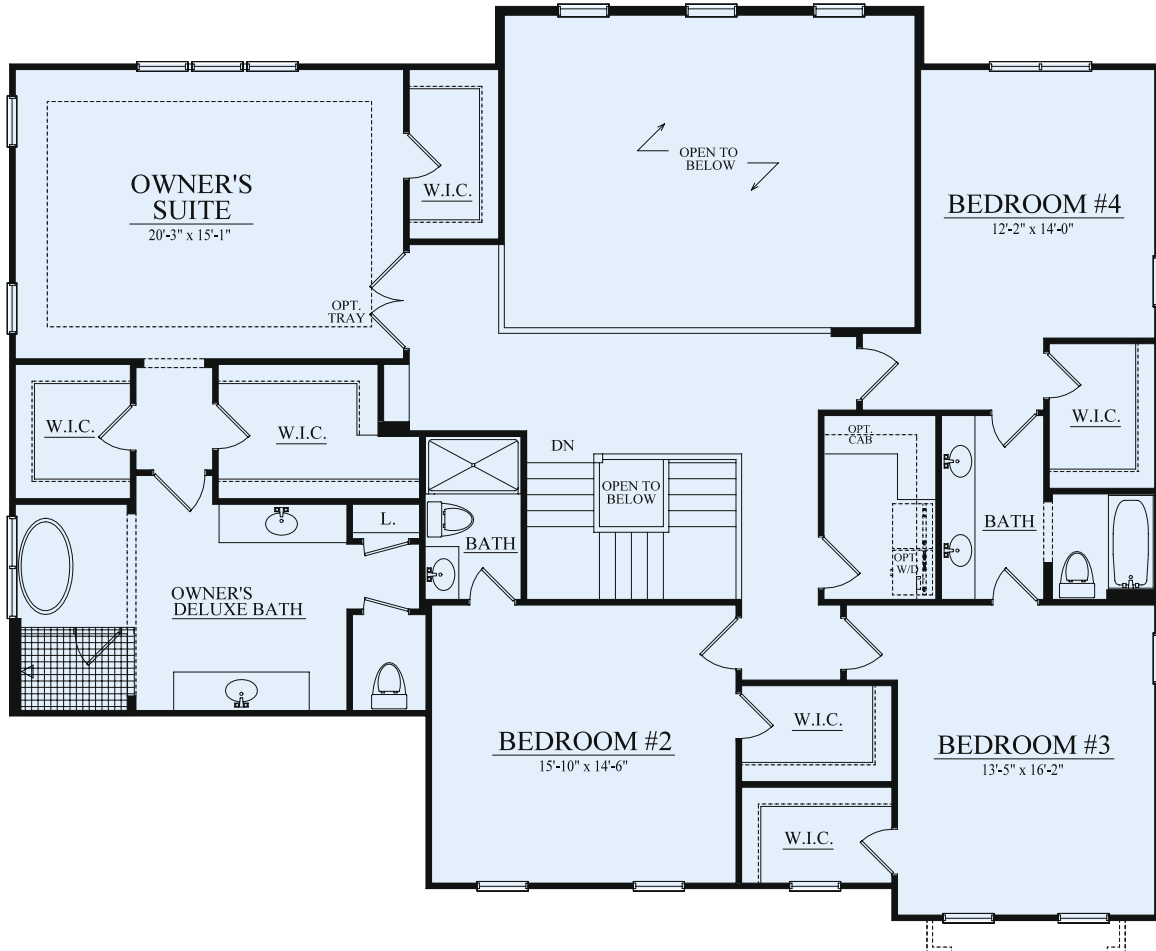
SECOND FLOOR PLAN



Optional Loft



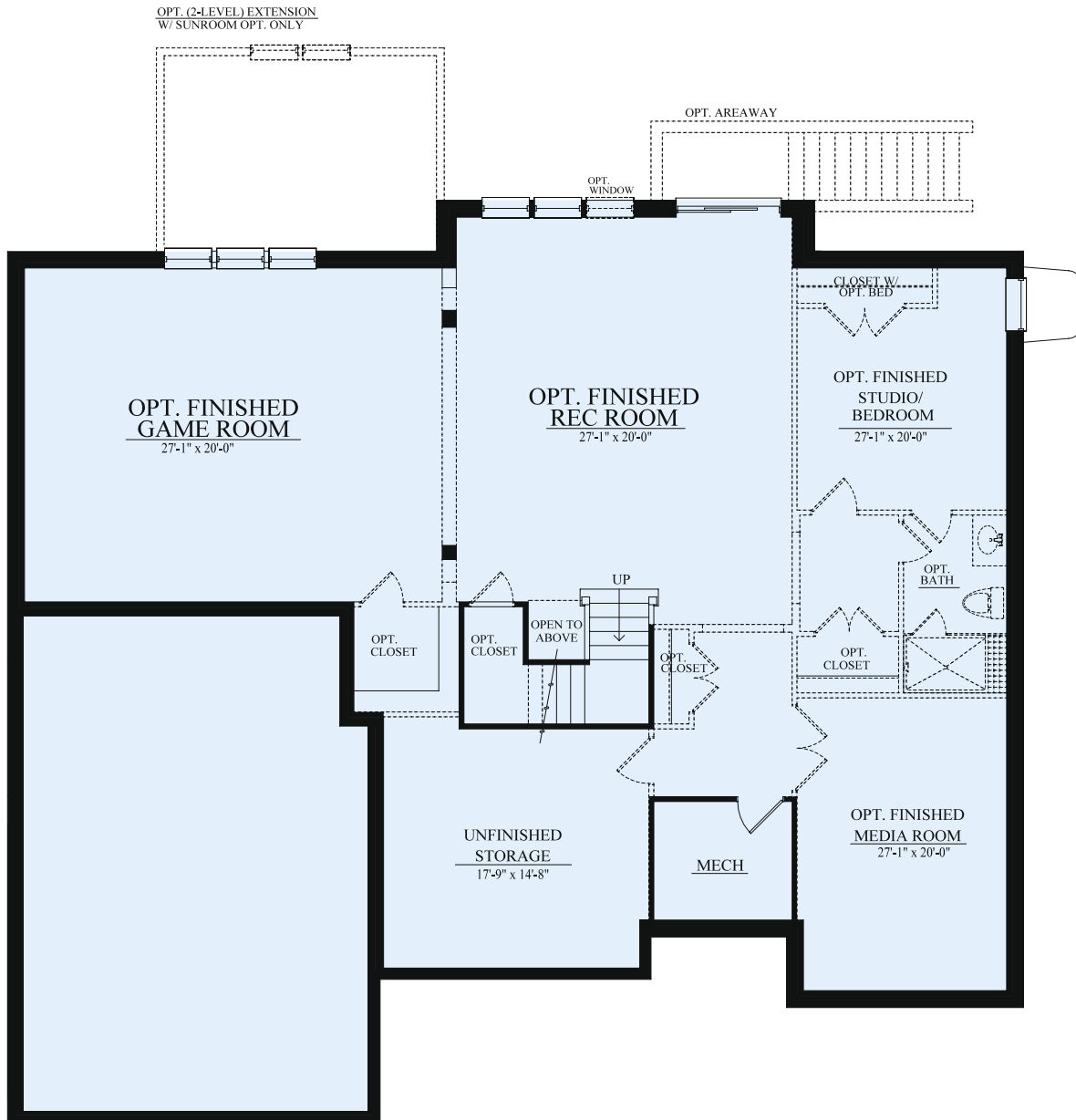
Optional Bedroom #5 & Bath



DREAM FINDERS HOMES

THE *Durham*

LOWER LEVEL



CGC1259652